



LATEX 118



Water Resistant Polymer Bonding Agent and Mortar Modifier

IMPROVE YOUR MORTAR BOND STRENGTH WITH LATEX 118

LATEX 118 enhances the quality of cement mortars such as floor protective screed, thin layer patching mortar, render, concrete repair mortar, tile adhesive, abrasion resistant lining and masonry mortar.

LATEX 118可提升水泥砂浆的粘附和品质，例如地面砂浆，薄层修补砂浆，抹灰，混凝土修补砂浆，耐磨衬里砂浆，砌筑砂浆。

Application / 应用资料

For Bonding Slurry:

Add Nippon Paint Latex 118 and mix with fresh cement to a creamy consistency. Brush well onto prepared surface.

用于结合泥浆:

把Nippon Paint Latex 118和水泥混合在一起，然后涂刷在施工的表面上。

For High-Performance Render Ratio:

25 Litres of Nippon Paint Latex 118 : 50kg of cement : 150kg of sand.

用于更好的防水效果:

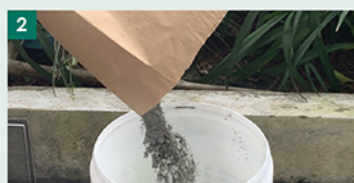
把25公升的Nippon Paint Latex 118，50公斤的水泥与150公斤的沙子混合在一起。

- Excellent adhesion and durability**
优异的附着力和耐用性
- Excellent crack and water resistance**
优异的抗裂性和防水性
- Good flexural and impact strength**
良好的抗弯性和冲击能力

Method of Statement / 施工方法



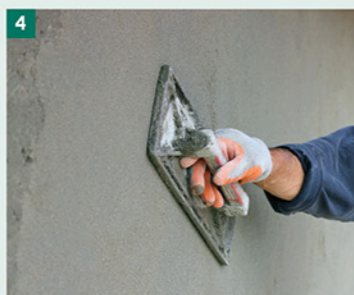
1 Pour the NIPPON LATEX 118 into a pail
将NIPPON LATEX 118倒入空桶



2 Add cement and sand
再倒入水泥和沙



3 Mix thoroughly
将材料均匀搅拌



4 Apply directly to construction surface by using cement knife
用水泥刀均匀涂布在施工的表上面



5 Finish with tile
涂布完成后并铺盖瓷砖

Technical & Physical Data

Form: Liquid
Color: Milky White
Density : 1.00 ± 0.02
Working Time (25°C): 40 Minutes
Drying Time (25°C): 6 Hours
Curing Time (25°C): 24 Hours
Bond Strength on Concrete (7 Days): 10kgf/cm ²
Consumption: 2kg/m ²
Shelf Life: 1 year when unopened and undamaged
Storage condition: Store in dry cool place
Packaging: 4L, 18L



SO WHEN DO YOU START TO WATERPROOF? 什么时候开始做防水?

During home renovation, Waterproofing to be done right after electrical and plumbing work. It should be noted that, Waterproofing membrane needs to be at least 1mm thick. 防水体系将在水电工程安装之后进行。而防水膜的厚度至少要1mm。



WATERPROOFING SOLUTIONS

Protect • Preserve • Prevent

- Crack Bridging / 裂纹桥联
- Easy Application / 容易使用
- Seamless Waterproofing / 防水紧密且无缝



NIPPON PAINT (M) SDN. BHD. (7516-H)
Lot I-17, Taman Perindustrian Subang Utama, Jalan SU 4,
40300 Shah Alam, Selangor Darul Ehsan, Malaysia.
☎ 1-800-88-2663 ✉ customercare@nipponpaint.com.my
🌐 www.nipponpaint.com.my 📱 facebook.com/nipponpaintmalaysia





FLEX 100

Water-based PU Modified Bituminous Waterproofing



FAST DRY & NO PRIMER NEEDED!

FLEX 100 is a single component PU modified bituminous waterproofing. It exhibits better curing, elongation and flexibility. It may be applied to any surfaces such as old or new masonry or concrete.

FLEX 100 是聚氨酯改性的沥青防水涂料。它具有更好的固化，伸长率和柔韧性。它可以应用于在任何表面，例如旧的或新的砖石或混凝土表面。

It can be use on / 它可用于:



Balcony 阳台



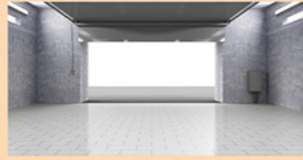
Bathroom 浴室



Patios 天井



RC Gutter
钢筋混凝土排水槽



Basement 地下室

- Floor slab 楼板
- Planter box 花盆箱
- Retaining wall 面墙

High elastomeric: able to crack bridge up to 1.5mm
高弹性以桥接裂纹高达1.5mm

Excellent resistance to chemicals, oils, bacteria, salt
抵抗化学品，油脂，细菌，盐

Zero VOC
零 VOC

Application / 应用资料

With brush, roller or spray method apply the first coat of FLEX 100 on the application surface. Leave to cure for approximately 8 hours before applying the second coat.

使用刷子，滚筒或喷涂将第一层Flex 100涂在应用表面。让第一层固化8小时，在施加第二道涂层。

Theoretical Coverage / 漆耗量 (理论值)

Brush / Roller : 1.00 - 1.10kg per m² for 0.5mm dry film thickness.

Method of Statement / 施工方法



1 Open the cover of FLEX 100
打开FLEX 100的盖子



2 Mix thoroughly
将材料均匀搅拌



3 Apply with brush, roller or spray
用滚筒, 喷涂或刷子均匀涂布



4 Finish with cement screed or tile
涂布完成后并铺盖沙灰或瓷砖



Excellent elongation >1000%
优异的伸长率
(Sirim test >1000%)



System Build Up / 系统构建



Technical & Physical Data

Form: Smooth and thixotropic dark black liquid paste
Color: Black when dry
Density: 1.35 ± 0.05
Tensile Strength (MPa) ASTM D 412:13: >1.0
Elongation to break (%) ASTM D 412:13: 1000
Softening Point (°C): >120
Water Resistance: No blistering or re-emulsification
Adhesion Strength (MPa): > 1.0
Water Vapor Permeability (g/m ² /24 hours): 0.15
Shelf Life: 1 year when unopened and undamaged
Storage condition: Store in dry cool place
Packaging: 20kg
Hard Dry: < 24 hours
Touch Dry: 4 - 6 hours



FLEX 200

UV Resistant Elastomeric Acrylic Waterproofing



FAST DRY & NO PRIMER NEEDED & JOB DONE WITHIN 6 HOURS

FLEX 200 is an elastomeric breathable acrylic polymer waterproofing membrane. It is cured to form a seamless, UV-durable, protective waterproof and decorative membrane. It is a waterproofing and weather proofing for old and new construction. It is suitable for above ground, interior and exterior waterproofing application.

FLEX 200是拥有可伸缩性，透气力的丙烯酸防水涂料。当它固化之后将形成无缝，抗紫外线的防水膜。它应用于室内和室外。

It can be use on / 它可用于:



Roof 屋顶



Terrace 露台



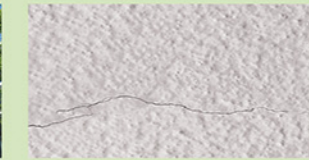
Ceiling 天花板



Balcony 阳台



Overhang 悬挑



Sealing cracks and joint on wall
密封墙上的裂缝和接缝

Flexible: Capable of bridge stationary cracks
灵活: 能够固定桥梁裂纹

Resistance against salt and atmospheric gases
抵抗盐和大气中的气体

UV Resistance
抗紫外线

Application / 应用资料

With brush, roller or spray method apply the first coat of FLEX 200 on the application surface. Leave to cure for approximately 1 hour before applying the second coat.

使用刷子，滚筒或喷涂将第一层Flex 200涂在应用表面。让第一层固化1小时，在施加第二道涂层。

Theoretical Coverage / 漆耗量 (理论值)

Brush / Roller : 0.35kg per m² / coat.

Method of Statement / 施工方法



1 Open the cover of FLEX 200
打开FLEX 200的盖子



2 Mix thoroughly
将材料均匀搅拌

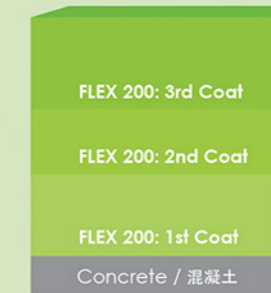


3 Apply with brush, roller or spray
用滚筒, 喷涂或刷子均匀涂布



4 Can use on internal or external wall
亦可涂布在建筑物内外牆

System Build Up / 系统构建



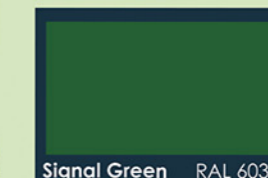
Technical & Physical Data

Form: Liquid
Color: White, Green, Grey
Density: 1.354
Tensile Strength (MPa) ASTM D 412:13: 5.1
Elongation to break (%) ASTM D 412:13: 970
Water Resistance: No blistering or delamination
Adhesion Strength (N/mm ²): 2.4
Water Vapor Permeability (g/m ² /24 hours): 0.15
Shelf Life: 1 year when unopened and undamaged
Storage condition: Store in dry cool place
Packaging: 5kg, 20kg
Dry time: 60min at 30°C

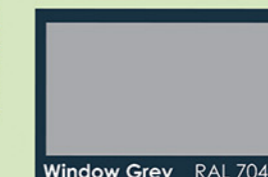
TOPCOAT AVAILABLE IN 3 COLOURS



White



Signal Green RAL 6032



Window Grey RAL 7040

*All colour shown in this printed card are as close to actual Nippon paint colours as modern printing techniques permit.