

## News Release

### For Immediate Publication

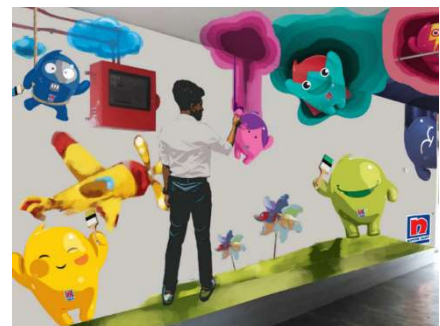
# ***First in Penang, then Ipoh, and now in Cheras***

*R.E.A.L Schools and Nippon Paint Malaysia join forces to create inspiring 3D murals*

**Kuala Lumpur, 25 June 2019:** In a continuous effort to create enriched learning environments for students, R.E.A.L Schools (*an entity under R.E.A.L Education Group*) and Nippon Paint Malaysia Group (“Nippon Paint”) have collaborated for the creation of 6 murals at R.E.A.L Schools, Cheras Campus.

The mural project, which took 3 weeks to complete, is part of R.E.A.L Schools’ effort to create a stimulating and conducive environment for students, as well as to pave the way for the students to further develop their creative talents. The murals are also testament to R.E.A.L Schools, Cheras Campus’ dedication in the field of Arts & Design, where educators and students alike are constantly encouraged to push their creative boundaries. The murals were inspired by the murals in Penang and Ipoh, which became popular with both foreign and local tourists.

Speaking at the unveiling of the murals, Dr. Goh Chee Leong, CEO of R.E.A.L Education Group, said ***“Through our collaboration with Nippon Paint, we have been able to provide our educators and students with an opportunity to push their creative boundaries through the painting of the murals. This is in line with our vision to provide REAL education for the REAL world, and this involves preparing our students for the 4<sup>th</sup> and 5<sup>th</sup> industrial revolutions, which include skills relating to design, digital education, performing arts and more. And to add to that, we don’t need to go all the way to Penang or Ipoh to experience these creative 3D murals!”***



*Creativity is the centre of all education:  
The 3D murals are also a reflection of  
R.E.A.L Schools, Cheras Campus’  
excellence in the field of Arts & Design.*

Speaking on the collaboration, Ms. Gladys Goh, Group General Manager of Nippon Paint Malaysia, said, ***“At Nippon Paint, we understand the importance of students developing a sense of innovation and creative thinking. This is why we constantly inspire them to express themselves and be adventurous by exploring through colours, and create ideas that are outstanding and push conventional boundaries. Through our end-to-end coatings solutions which cover all types of surfaces, we are able to work with R.E.A.L Schools to bring the 3D mural art to life on various wall surfaces. Our aim is also to create a vibrant environment for students to study and interact in.”***



***Old Bas Sekolah and Kapal Terbang Kertas:*** These two murals tell the story of the good old days, creating a sense of nostalgia amongst school leavers.



***World Wonders:*** This mural aims to showcase the wonderful historical monuments from around the world.

According to R.E.A.L Schools, the murals are a reflection of R.E.A.L’s commitment to inspire students to explore lessons beyond books and classrooms. Most of the murals create a sense of nostalgia for school leavers by capturing the best school experiences. Beyond that, some of the murals are also educational and aim to educate students on global monuments and landmarks.

Dr. Goh added, ***“Our R.E.A.L Schools Cheras Campus has always pride itself for excellence in Arts & Design and this is why the campus has been selected to drive this particular collaboration. R.E.A.L Schools is committed to providing students with an avenue to develop their natural talents and further discover their potentials along the way, which the students have been able to do through this collaboration. At R.E.A.L Schools, the learning journey has always been focused on nurturing and transforming students through active learning.”***



***The Art Realm*** creates a great first impression by showcasing a building full of colours.

The murals at R.E.A.L Schools Cheras Campus were coated with Nippon Paint's Weatherbond exterior range, which provides protection against the harsh climate faced in Malaysia for 7 years and beyond.

This collaboration marks the second collaboration between Nippon Paint and R.E.A.L Education Group. In 2015, Nippon Paint repainted the R.E.A.L Kids Bukit Jelutong centre in conjunction with the launch of Nippon Paint VirusGuard, an eco-friendly paint certified by the Singapore Green Label Test and developed with *Silver Ion™ Technology* to persistently shield and inhibit the growth of viruses and bacteria on the coated surface, decreasing the spread of contagious illnesses such as Hand, Foot and Mouth Disease (HFMD) and H1N1.

R.E.A.L Schools Cheras Campus will be organising an Open Day on 13 July 2019 from 9.00am until 3.00pm, where visitors will have the opportunity to view the new murals while learning more about how R.E.A.L Schools nurtures students through active learning. For more information on the Open Day, please call 03-9021 3601.

###

### **About Nippon Paint Malaysia Group**

The Nippon Paint Malaysia Group ("NPM Group") is currently Malaysia's No. 1 Total Coating Solutions provider, enjoying its market leadership position since 2008. The NPM Group is part of the Nippon Paint Group, which is currently Asia's No. 1 coating manufacturer spanning 15 countries, built on a heritage of over 130 years dating back to 1881 in Japan.

Established in 1967 as Nippon Paint (Malaysia) Sdn. Bhd., the company has since grown in leaps and bounds, and today, has emerged as a significant regional player within the coatings industry with presence in countries such as Pakistan, the Philippines, Bangladesh, Thailand, Iran and Indonesia.

The NPM Group places strong emphasis in Research and Development (R&D) activities, which remains a core priority to its success in product innovation. As a global leader in coating technologies with a database of more than 10,000 paint formulations, the NPM Group prides itself in being a Total Coating Solutions provider with a multi-segment portfolio of offerings ranging from Architectural, Automotive, Industrial, Protective to Marine coatings.

The Group has won consumer choice awards such as the Reader's Digest Trusted Brand Awards (2006-2018) and Putra Brand Awards (2010-2018), as well as received industry accolades such as the APPIES 2018 Gold award for its Child Wellness Range campaign, Best Company for Leadership in Paint Technology Asia by IAIR in 2014 and Frost & Sullivan's Paint & Coatings Company of The Year in 2011, the Paint Company of the Year 2016 and New Product Innovation Leadership Award

2016. In its concerted effort to champion sustainability towards a greener footprint, the Group has received the Green Label Certification (by the Singapore Environment Council), EcoLabelling Certification License (by SIRIM QAS International) and several Green Excellence Awards by Frost & Sullivan.

***For more information on Nippon Paint Malaysia:***

Website: [www.nipponpaint.com.my](http://www.nipponpaint.com.my)

Facebook: [www.facebook.com/nipponpaintmalaysia](https://www.facebook.com/nipponpaintmalaysia)

YouTube: [www.youtube.com/NipponPaintMalaysia](https://www.youtube.com/NipponPaintMalaysia)

Toll free no: 1-800-88-2663

**About R.E.A.L Schools**

Established in 1985, R.E.A.L Schools has expanded to six schools offering both International and National curriculums spread across three campuses in Cheras, Shah Alam and Johor Bahru (JB). Since their establishment, they have nurtured students to achieve real transformation and success through holistic education of exceptional standards.

R.E.A.L Schools was first founded as Sekolah Sang Suria in a small bungalow in Cheras with a humble beginning of just 40 students. The school quickly outgrew its first home and was soon moved to its present 10-acre land within a peaceful environment in Cheras, taking on the name Sekolah Seri Suria. Today, the school is known as R.E.A.L Schools, Cheras Campus.

R.E.A.L Schools prides itself in giving students a distinct and diverse range of learning experiences that not only enhances their knowledge and skills, but nurtures talent and potential as well. These broad scopes of educational endeavours encompass everything from student excursions to practical learning platforms – all in an effort to provide students with REAL education for the REAL world.

R.E.A.L Schools is part of R.E.A.L Education Group (a member of Paramount Education) which, along with R.E.A.L Schools, has over 30 kindergartens (R.E.A.L Kids) and more than 60 enrichment centres (Cambridge English For Life or CEFL) nationwide. Established in 1985, R.E.A.L Education Group has grown over the past 30 years to be one of Malaysia’s leading education service providers.

***For more information on R.E.A.L Education Group, visit [www.real.edu.my](http://www.real.edu.my)***

---

***Issued by Perspective Strategies. For media enquiries, please contact:***

Tel: 03 - 7491 3138, Fax: 03 - 7733 3138

Anita Teh, Ms.

Email : [anita.teh@perspective.com.my](mailto:anita.teh@perspective.com.my)

Mobile : +60 14 – 396 9433

Kimberly Tan, Ms.

Email : [kimberly.tan@perspective.com.my](mailto:kimberly.tan@perspective.com.my)

Mobile : +60 12 – 609 5931